



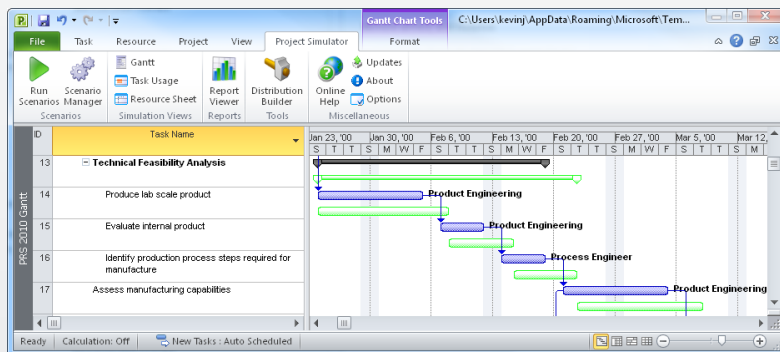
overview

Project Simulator 2010 is a scenario planning, simulation and reporting add-in for Microsoft Project enabling project managers to rapidly Visualize, Analyze and Optimize their project plans, resulting in a higher probability of completing projects on-time and under-budget.

Project Planning - Project managers are often challenged with selecting the best method for executing a project before it even begins. This involves analyzing decisions such as using Technology A vs. Technology B or conducting the project in-house vs. outsourcing. Effective selection of the most appropriate plan can be difficult and time consuming considering that the life cycle of a project contains both variability and interdependency. Project Simulator 2010 takes this variability and interdependency into account by providing answers with ranges and confidence levels, resulting in a more accurate forecast of project performance.

Project Execution - Once the project has begun, project managers have a different set of issues than during the planning stage such as missed deadlines, new bottlenecks and changes in available resources. Project Simulator 2010 addresses these issues by allowing managers to identify and test ways of getting projects back on schedule if they fall behind.

methodology



1

Add Range Estimations to Your Project

Within Microsoft Project, real life variability is added to task times and resource availability using simple factors or advanced statistical distributions.

2

Create Project Scenario(s) with Variability

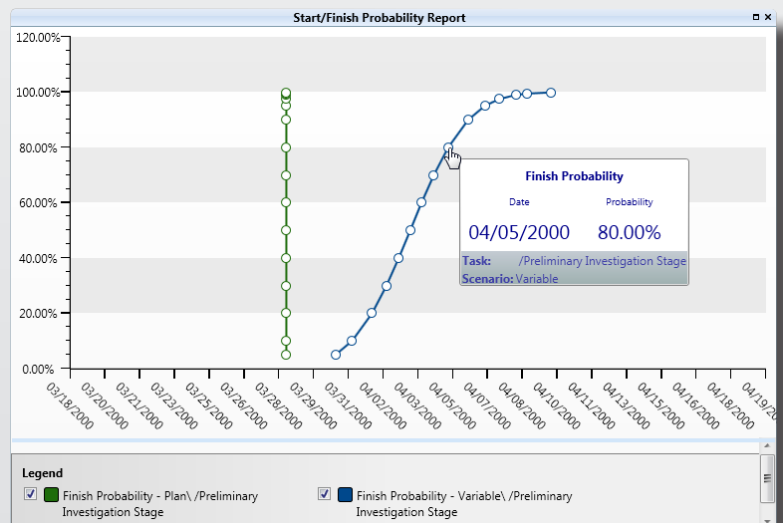
Easily create “what-if” scenarios and reports through the simulation engine.

Make Decisions Driven by Project Scenario Analytics

View the information you need to reach your project goals and make important decisions, such as:

- Improved Resource Allocation
- Investment Decisions
- Outsourcing Strategies
- Process Improvement Initiatives
- Project schedule selection

3



Resource Requirements vs. Resource Capacity Over Time

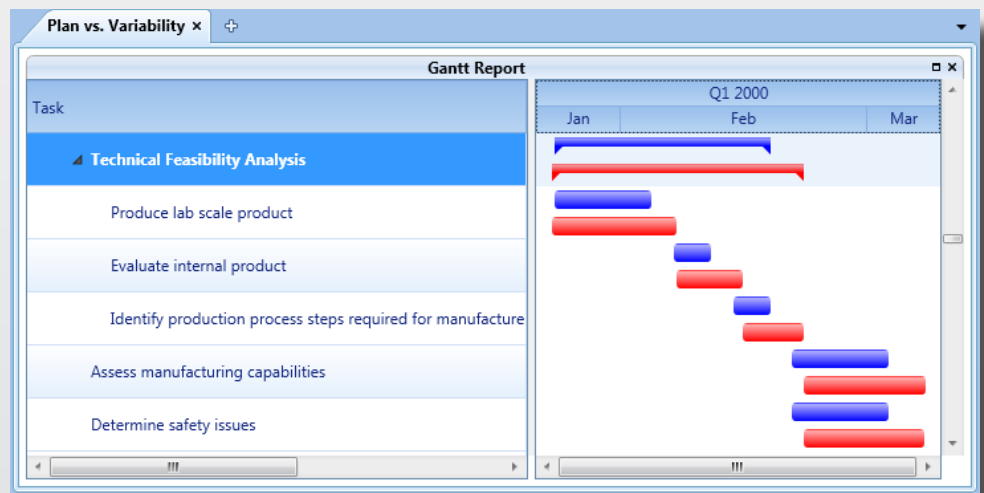


New Features

- Microsoft Project 2010 Support
- Streamlined User Interface
- Faster Simulations
- More Powerful Reports
- Easier to Use than Ever Before

Using Monte Carlo techniques as well as ProModel's proven discrete event simulation engine, Project Simulator 2010 provides side by side scenario comparison capability so users can visualize and analyze:

- Project Finish date probabilities
- Resource requirement ranges over the lifecycle of the project:
 - By Resource
 - By Project
 - By Key Milestones
- Gantt charts that show the average of all Start dates and Average of all Finish dates per task
- Bottlenecks next month, next quarter, next year
- Which limited resource is causing the largest project delay
- The effect of resource constraints on project plans
- Realistic project completion dates that consider task duration variability and constraints



Side by Side Scenario Comparison



ISV/Software Solutions
Information Worker Solutions