



overview

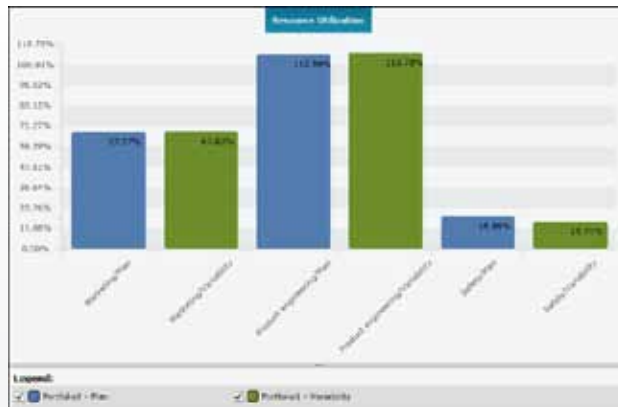
ProModel's web-based Enterprise Portfolio Simulator leverages Microsoft Project Server for optimal strategic planning

ProModel's Enterprise Portfolio Simulator reduces the risk and uncertainty involved in strategic and long-term resource capacity planning by providing objective, accurate, and quantified portfolio performance information in an accessible, web-based application. This improved information generates more confidence in predicting how your organization will likely perform in the future.

Enterprise Portfolio Simulator provides the flexibility to merge data from Microsoft Project Server in a seamless integration of two powerful tools, allowing you to understand your project data in a more dynamic way.

Decision makers across the enterprise involved in planning and managing projects, resources, technology, and investments can now make better decisions, faster. Enterprise Portfolio Simulator allows you to make more effective decisions by generating real-life scenarios and letting you analyze such factors as:

- Strategic Value
- Net Present Value
- Portfolio Productivity
- Resource Constraints
- Probability of Success



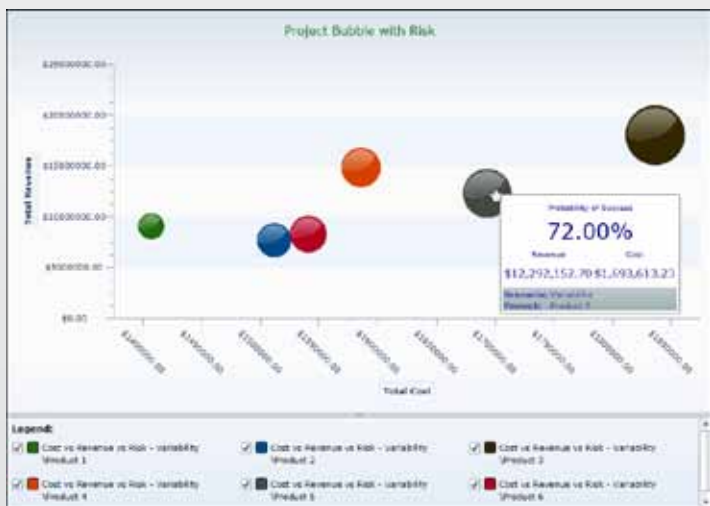
Easily compare resource utilization across scenarios to identify resource constraints.

ProModel's Enterprise Portfolio Simulator reduces the uncertainty in strategic planning helping you make better decisions, faster.

Enterprise Portfolio Simulator helps you achieve your desired performance objectives, in a shorter time frame, with minimal risk in areas such as:

- Resource Investments
- New Product Introductions
- Technology Investments
- Strategic Alliances
- Project Prioritization
- Prioritizing Process Improvement Initiatives

In one integrated solution, Enterprise Portfolio Simulator and Microsoft Project Server provide a true web-based collaborative environment for predictive scenario comparisons, so your entire organization can now visualize, analyze, and optimize its portfolio of projects without jeopardizing the actual execution of the system.



Bubble Charts for Multi-Dimensional Portfolio Analysis.

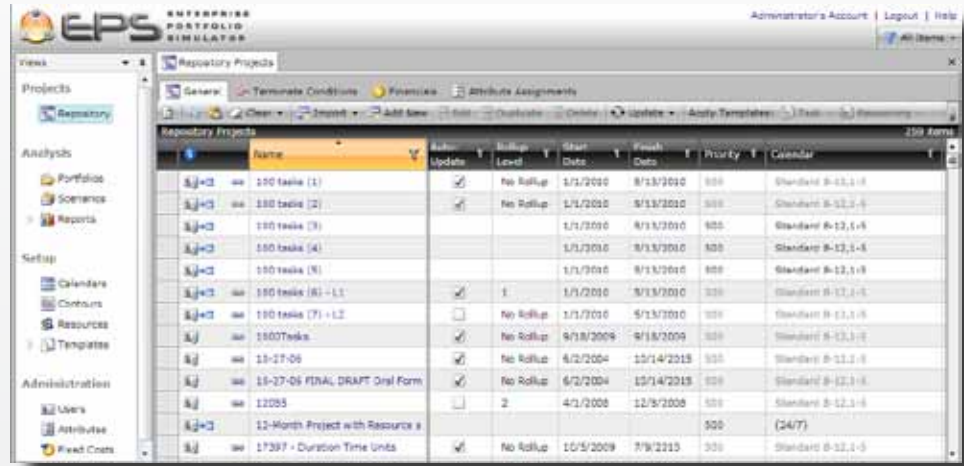
Visualize - Analyze - Optimize

3 Step-Methodology

1

Visualize Your Portfolio

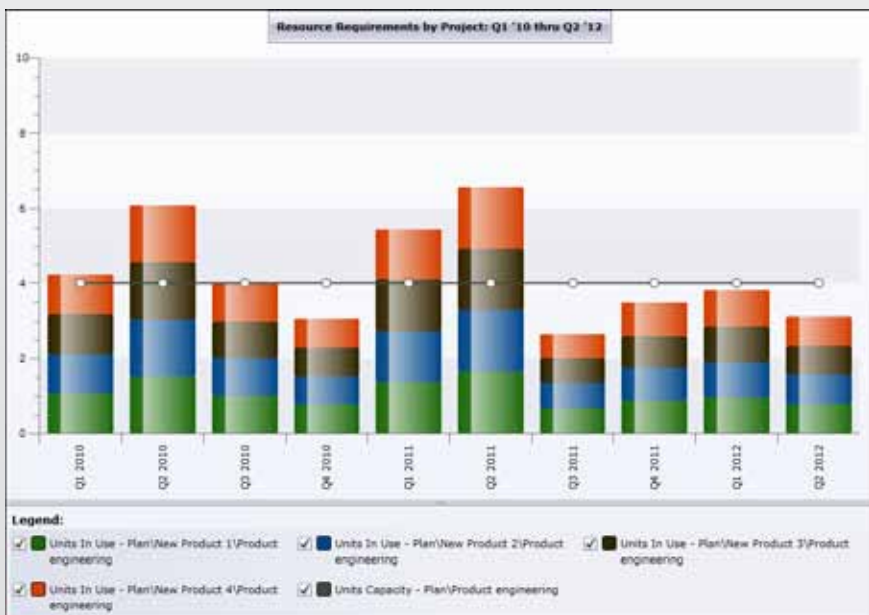
Determine how your portfolio of projects will perform in its current state. Begin with detailed individual project plans from Microsoft's Project Server, or create new plans from pre-defined templates right in Enterprise Portfolio Simulator. Modify or add additional inputs such as:



Project Repository – Upload or create new projects; Decide which Project Server Projects to link to.

- Duration and Work Variability
- Reporting Attributes
- Survival Rate Assumptions
- Business Rule Assumptions
- Project Prioritization
- Timelines
- Stage or Activity Duration Times
- Resource Requirements
- Revenue Assumptions
- Resource Capacity Changes Over Time

Enterprise Portfolio Simulator fosters a collaborative web based environment to conduct forecasting and predictive analysis in order to more accurately and quickly quantify the impact of your decisions on the entire portfolio – before you implement.



Resource Requirements– shows resources required over time to meet your portfolio demands vs. planned capacity (each color is a different project).

2

Analyze Your Portfolio

Identify all the possible opportunities for improving portfolio performance by analyzing the following options:

- Prioritization
- Licensing
- Resource requirements
- Productivity Initiatives
- Outsourcing
- Diversification

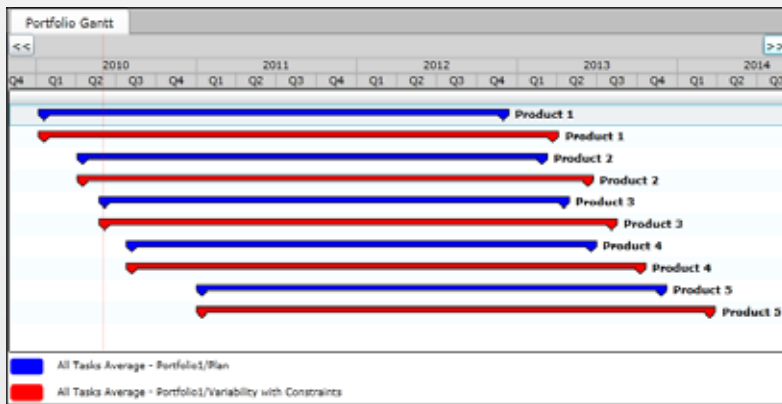
3

Optimize Your Portfolio

An optimized method for decision making provides managers with the understanding necessary to meet performance objectives, with a high level of probability for success, today and into the future.



Financial reports – illustrates revenue, costs, and Net Present Value (NPV) comparisons over time.



Project performance – probability of when a project will hit a milestone and its impact on the portfolio.

Experimenting with parameters and portfolio options allows you to see the impact on your Key Performance Indicators (KPI's) across multiple scenarios simultaneously. Enterprise Portfolio Simulator also provides confidence-level reporting around the following KPI's:

Portfolio Performance (over time)

- Expected Net Present Value (NPV)
- Expected Net Accumulated Value (NAV)
- Costs & Revenue
- Total Resource Requirements
- Resource Capacity compared to Requirements
- Start and Completion Times for key stages/ milestones
- Cycle Times
- Productivity

Enterprise Portfolio Simulator offers both simulation and scenario comparison capabilities, with easy to use features such as:

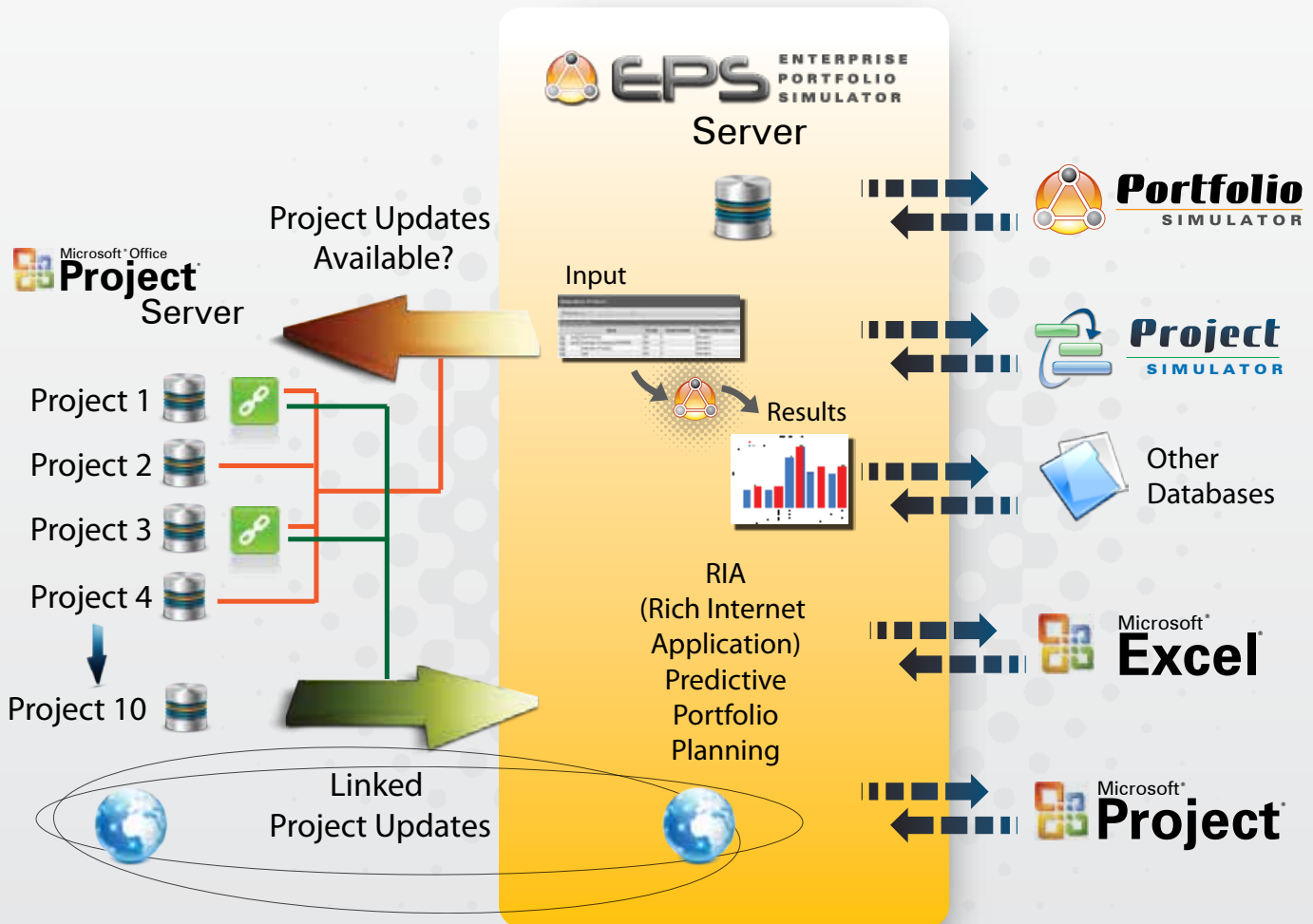
- A dynamic user interface that provides a common platform for analyzing short-term, known projects in conjunction with longer-term, potential projects.
- Customizable templates to allow for quick and easy replication.
- Ability to import detailed project data from Microsoft Project Server.
- Pre-defined reports which lead to YOUR most effective courses of action.



Understand the probability of getting a project completed or a product to market over any time frame.

How Does it Work?

Enterprise Portfolio Simulator is based on ProModel's powerful leading-edge simulation technology combined with a new, web-browser based approach that is 100% online accessible to team members across an organization. The Enterprise Portfolio Simulator environment connects directly to Microsoft Project Server on a project-by-project basis that you determine, or can be populated directly through its own customizable interface without relying on another system. Merging data from Microsoft Project Server is quick and easy using a strategic roll-up feature that allows you to import detailed project files in a summarized, high-level structure, all while maintaining a link to the project plans for continual updates.



Enterprise Portfolio Simulator combined with Microsoft Project Server leads to an optimal portfolio!

Once the Enterprise Portfolio Simulator project repository is populated, comparative "what-if" scenarios can be created and run. The results can be viewed and analyzed through flexible output tables, charts, and graphs. Enterprise Portfolio Simulator integrated with Microsoft Project Server fosters a collaborative environment enabling a more dynamic, proactive, and effective approach to portfolio planning and implementation.